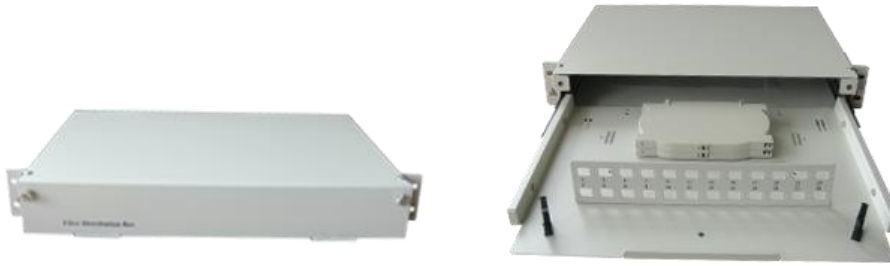


Rack Mount (Sliding Tray)



FIBER DISTRIBUTION BOX (Rack Mount) 1.5 U



FIBER DISTRIBUTION BOX (Rack Mount) 3 U

The rack mount enclosure is designed for high density patching application. The rack enclosure is available for 12, 24, 48, 72, 96, 120 fibers in the standard beige color. The sliding tray have ball bearing slide hanging which easy to push or pull and also they provide the patching area for patch splice. The splicing tray cab splice 12 fibers/ each tray, easy to add the splice tray.

Features:

- 19" or 21" rack mount
- Terminates 12, 24, 48, 72, 96 up to 120 fibers
- Provides easy access for Connector FC, SC, LC, ST, E2000 panel.
- Pullout splicing tray for convenient splicing and field termination
- Equipped with cable management
- Removable door with life-off hinges
- Material – Steel Case 1.5mm with powder coating
 - Size : MM : 12 & 24 port (1U) = 430(W) x 45(H) x 30(D)
 - 12 & 24 port (1.5U) = 430(W) x 68(H) x 30(D)
- Material – Aluminum Case 2mm with powder coating
 - Size : MM : 48 & 72 port (3U) = 430(W) x 135(H) x 30(D)
 - 96 & 120 port (5U) = 430(W) x 220(H) x 30(D)
- Accessory: Cage Nut , Cable ties 8", Cable ties 4", Sticker, Sleeve 60 mm, Splice Tray 12Fiber